

SERRANA

LAKEFRONT POOL VILLAS PHUKET



SERENITY

REDEFINED

CONCEPT DESIGN

A SANCTUARY CRAFTED FROM EARTH, EMBRACED BY WATER

SERRANA is more than just a home; it is a sanctuary where modern architecture meets nature's finest elements, designed to inspire and elevate your lifestyle. Nestled beside a tranquil lake in the vibrant heart of Phuket, SERRANA has crafted a space that balances contemporary sophistication with organic materials, creating a breathable home that feels both fresh and enduring. The design concept, rooted in being bright, being breeze, being bold, and being well,

ensures that every resident of SERRANA experiences a life of tranquility, warmth, and authenticity. This is where luxury and well-being converge, offering you not only a beautiful living environment but also an aspirational space that nurtures your ambitions and enhances your daily life. At SERRANA, embrace a lifestyle of refined elegance and thoughtful design, where every detail is crafted to enrich your living experience.



CONCEPT

DESIGN



AN OASIS OF ELEGANCE AND SERENITY

INNOVATIVE DESIGN

SERRANA redefines conventional luxury living with bold forms and sculptural elements that captivate the senses. The development features an infinity pool that seamlessly integrates with the landscape, offering a serene space for relaxation while providing stunning views of the tranquil lake.

RAMMED EARTH WALLS

At SERRANA, rammed earth walls offer a unique aesthetic with natural tones and textures that connect your home to the environment. This ancient technique enhances visual appeal while providing thermal efficiency and sound insulation. Using locally sourced materials, it minimizes environmental impact, making your home both beautiful and eco-friendly.

SEAMLESS INDOOR-OUTDOOR CONNECTION

Generous fenestration blurs the lines between indoor and outdoor environments. This design approach frames expansive views of the lake and allows natural light to cascade into the interiors, creating a harmonious dialogue with nature.

PRIVATE OUTDOOR SPACES

Each residence features private terraces that overlook the tranquil waters, offering residents personal sanctuaries for relaxation and contemplation, promoting a sense of peace and connection with the environment.

SUSTAINABLE MATERIALS

SERRANA's commitment to sustainability is reflected in the choice of materials. These eco-friendly materials not only enhance durability and aesthetic appeal but also demonstrate a dedication to responsible building practices.

HOLISTIC SANCTUARY

Every aspect of the residence is meticulously crafted to foster well-being and serenity. SERRANA provides an oasis of calm amidst the demands of modern living, creating a rejuvenating environment that nurtures the soul.

CONVERGENCE OF LUXURY AND NATURE

The architecture at SERRANA exemplifies the harmonious integration of luxury, dynamic design, and aspirational living. It connects closely with the pristine natural landscape, offering a living experience where luxury meets the purity of nature.

WHERE LUXURY MEETS NATURE



LAKESIDE LIVING

Experience the tranquility of lakeside living at SERRANA. Each villa is positioned to offer serene privacy, allowing you to unwind and disconnect from the world while being surrounded by stunning natural beauty. The lake becomes a part of your everyday life, providing a peaceful retreat right at your doorstep.



THE BEAUTY OF THE DAWN

Wake up to breathtaking lakeside sunrises that fill your home with natural light. Every morning begins with a stunning view, inspiring a sense of calm and rejuvenation. SERRANA's thoughtful design ensures that each villa captures the beauty of the dawn, making every day feel like a fresh start.



THE CRAFTSMANSHIP OF THE LIVING SPACE

SERRANA's villas are crafted with precision and care, blending elegance with nature. Using premium materials like rammed earth, stone, and wood, each home embodies luxury and harmony. From sloping roofs to spacious interiors, every detail reflects the seamless connection between craftsmanship and the environment.

PROJECT INFORMATION

DEVELOPER

ARNA DEVELOPMENT
COMPANY LIMITED

PROPERTY MANAGEMENT

KNIGHT FRANK PHUKET
COMPANY LIMITED

LAND AREA

9-3-54.28 RAIS
(15,817.12 SQ.M.)

LOCATION

BAN MANIK,
CHERNGTALAY,
PHUKET

FACILITY

GYM

TOTAL UNIT

20 UNITS

OWNERSHIP

LEASEHOLD

SERRANA

PROJECT INFORMATION

VILLA TYPE

LAKESIDE (1-STOREY)

TYPE A
4 BEDROOMS (5 UNITS)

BUILT-UP : 501 SQ.M.
LAND PLOT : 652-934 SQ.M.

TYPE B
3 BEDROOMS (5 UNITS)

BUILT-UP : 426 SQ.M.
LAND PLOT : 616-713 SQ.M.

LAKEVIEW (2-STOREY)

TYPE C
3+1 BEDROOMS (10 UNITS)

BUILT-UP : 515 SQ.M.
LAND PLOT : 555-590 SQ.M.

SERRANA



LAKESIDE : TYPE A

LAKEVIEW : TYPE C

LAKESIDE : TYPE B

THOUGHTFUL
DESIGN

SEAMLESS
LIVING

MASTER PLAN

VILLA TYPE

LAKESIDE (1-STOREY)

- TYPE A : 4 BEDROOMS
BUILT-UP : 501 SQ.M.
LAND PLOT : 652-934 SQ.M.
5 UNITS

- TYPE B : 3 BEDROOMS
BUILT-UP : 426 SQ.M.
LAND PLOT : 616-713 SQ.M.
5 UNITS

LAKEVIEW (2-STOREY)

- TYPE C : 3+1 BEDROOMS
BUILT-UP : 515 SQ.M.
LAND PLOT : 555-590 SQ.M.
10 UNITS





LAKESIDE VILLA TYPE A

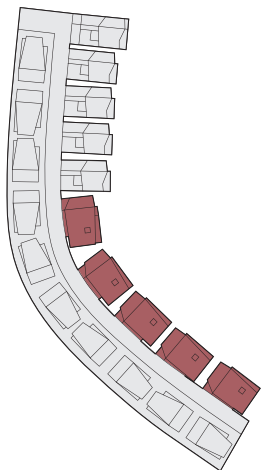
- Panoramic lakefront view
- Wide-frontage
- Double master bedrooms
With lake view
- 15-Meter length swimming pool
- Pool sunken seat
- Double kitchens (Western & Thai)
- Parking space for 3 cars

FLOOR PLAN TYPE A

LAND PLOT :
652-934 SQ.M.

BUILT-UP AREA :
501 SQ.M.

INTERNAL AREA : 281 SQ.M.
EXTERNAL AREA : 220 SQ.M.



4 BEDROOMS



5 BATHROOMS



3 PARKING SPACES



SWIMMING POOL
(3.5 X 15 M)



All texts and simulated images in this document are for advertising purpose only. The company reserves the right to make any change to the advertised details without prior notice.

15-METER LENGTH SWIMMING POOL

LAKESIDE / TYPE A



All texts and simulated images in this document are for advertising purpose only. The company reserves the right to make any change to the advertised details without prior notice.

LIVING AREA

LAKESIDE / TYPE A



All texts and simulated images in this document are for advertising purpose only. The company reserves the right to make any change to the advertised details without prior notice.

GRAND MASTER BEDROOM

LAKESIDE / TYPE A



All texts and simulated images in this document are for advertising purpose only. The company reserves the right to make any change to the advertised details without prior notice.

GRAND MASTER BATHROOM

LAKESIDE / TYPE A



All texts and simulated images in this document are for advertising purpose only. The company reserves the right to make any change to the advertised details without prior notice.

MASTER BEDROOM

LAKESIDE / TYPE A



All texts and simulated images in this document are for advertising purpose only. The company reserves the right to make any change to the advertised details without prior notice.

MASTER BATHROOM

LAKESIDE / TYPE A

COMPUTER GENERATED



All texts and simulated images in this document are for advertising purpose only. The company reserves the right to make any change to the advertised details without prior notice.

LAKESIDE VILLA TYPE B

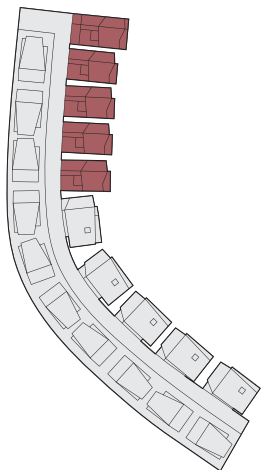
- Panoramic lakefront view
- 10-Meter length swimming pool
- Double kitchens (Western & Thai)
- Private courtyard
- Parking space for 2 cars

FLOOR PLAN TYPE B

LAND PLOT :
616-713 SQ.M.

BUILT-UP AREA :
426 SQ.M.

INTERNAL AREA : 215.5 SQ.M.
EXTERNAL AREA : 210.5 SQ.M.



3 BEDROOMS



4 BATHROOMS



2 PARKING SPACES



SWIMMING POOL
(4 X 10 M)



All texts and simulated images in this document are for advertising purpose only. The company reserves the right to make any change to the advertised details without prior notice.

10-METER LENGTH SWIMMING POOL

LAKESIDE / TYPE B



All texts and simulated images in this document are for advertising purpose only. The company reserves the right to make any change to the advertised details without prior notice.

PRIVATE COURTYARD

LAKESIDE / TYPE B



All texts and simulated images in this document are for advertising purpose only. The company reserves the right to make any change to the advertised details without prior notice.

LIVING AREA

LAKESIDE / TYPE B



All texts and simulated images in this document are for advertising purpose only. The company reserves the right to make any change to the advertised details without prior notice.

MASTER BEDROOM

LAKESIDE / TYPE B

COMPUTER GENERATED



All texts and simulated images in this document are for advertising purpose only. The company reserves the right to make any change to the advertised details without prior notice.

LAKEVIEW VILLA TYPE C

- Lake view (upper floor)
- Double master bedrooms
- 9.5-Meter length swimming pool
- Pool sunken seat
- Spacious pool deck
- Double kitchens (Western & Thai)
- Two dining areas
- One multi-purpose room
- Private lift (Optional)
- Parking space for 2 cars

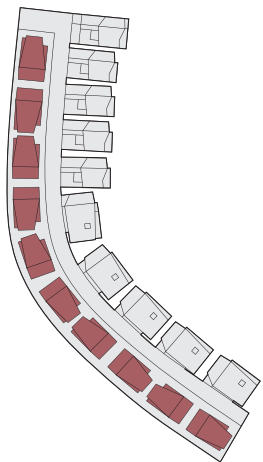
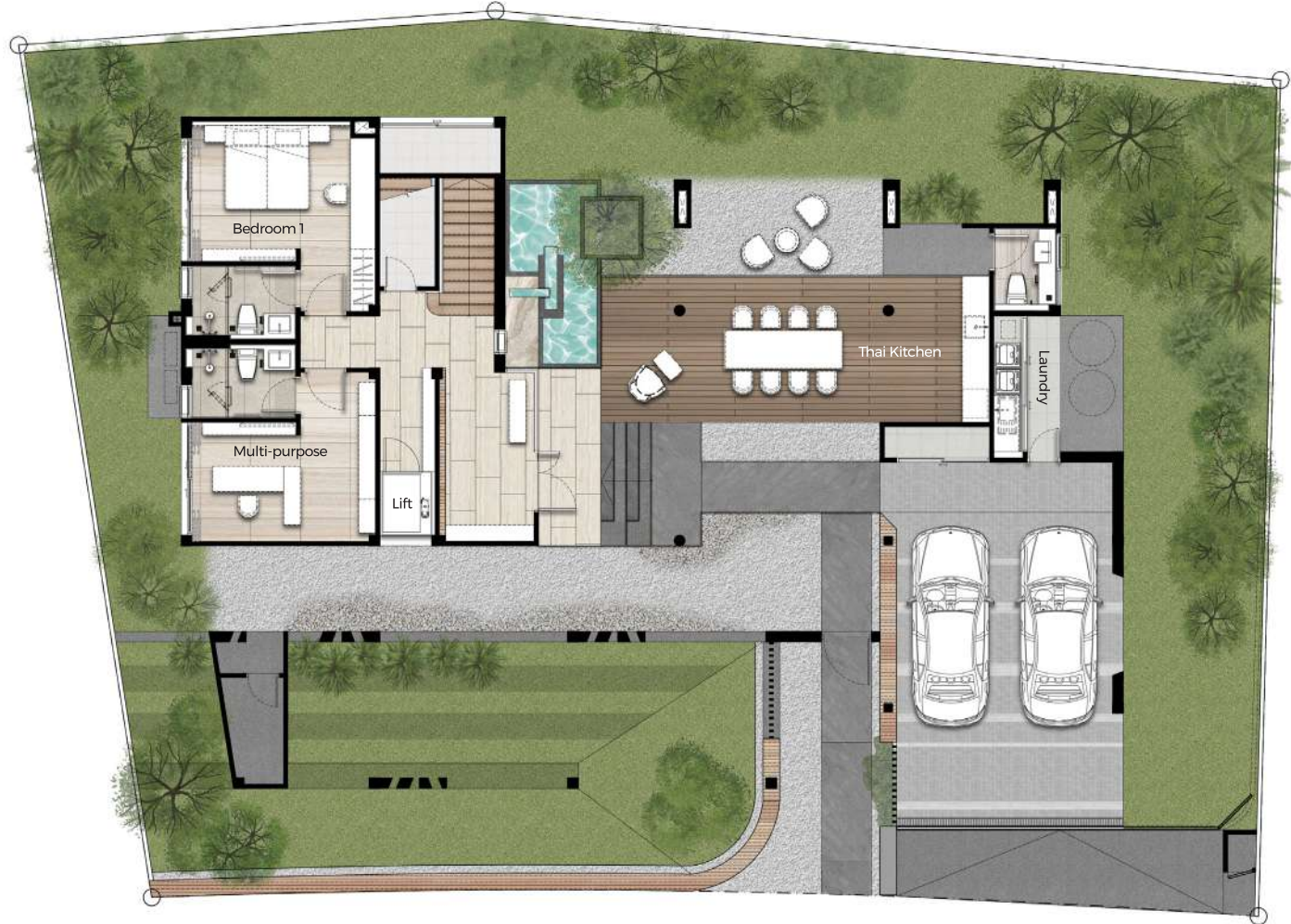
FLOOR PLAN TYPE C

LOWER

LAND PLOT :
555-590 SQ.M.

BUILT-UP AREA :
515 SQ.M.

INTERNAL AREA : 279 SQ.M.
EXTERNAL AREA : 236 SQ.M.



3+1 BEDROOMS



6 BATHROOMS



2 PARKING SPACES



SWIMMING POOL
(3.5 X 9.5 M)

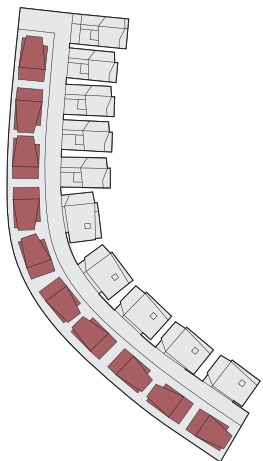
FLOOR PLAN TYPE C

UPPER

LAND PLOT :
555-590 SQ.M.

BUILT-UP AREA :
515 SQ.M.

INTERNAL AREA : 279 SQ.M.
EXTERNAL AREA : 236 SQ.M.



3+1 BEDROOMS



6 BATHROOMS



2 PARKING SPACES



SWIMMING POOL
(3.5 X 9.5 M)



All texts and simulated images in this document are for advertising purpose only. The company reserves the right to make any change to the advertised details without prior notice.

9.5-METER LENGTH SWIMMING POOL

LAKEVIEW / TYPE C



All texts and simulated images in this document are for advertising purpose only. The company reserves the right to make any change to the advertised details without prior notice.

LIVING AREA

LAKEVIEW / TYPE C



All texts and simulated images in this document are for advertising purpose only. The company reserves the right to make any change to the advertised details without prior notice.

PARTY TERRACE

LAKEVIEW / TYPE C



All texts and simulated images in this document are for advertising purpose only. The developer reserves the right to make any change to the advertised details without prior notice.

MASTER BEDROOM

LAKEVIEW / TYPE C

SIGNATURE
FEATURE

NATURE'S
TOUCH,
CRAFTED
FOR LIFE

Remark : This condition is subject to change without prior notice.
This is computer graphic generated



Every material in this project has been selected for its rare and exceptional quality, ensuring that every detail embodies the highest level of refinement. From the foundation to the final touches, the design radiates with meticulous craftsmanship, creating a living experience that is as elegant as it is comforting—a rare blend of beauty, comfort, and timeless luxury.



EARTHLY ELEGANCE : THE ART OF RAMMED EARTH

The rammed earth walls evoke a timeless connection to nature, grounding your living space in both beauty and sustainability. This ancient yet innovative technique not only enhances the aesthetics with its rich, natural textures but also keeps your home cool and serene, creating a sanctuary that breathes with the rhythm of the land.



THE BREEZE WITHIN: EFFORTLESS VENTILATION

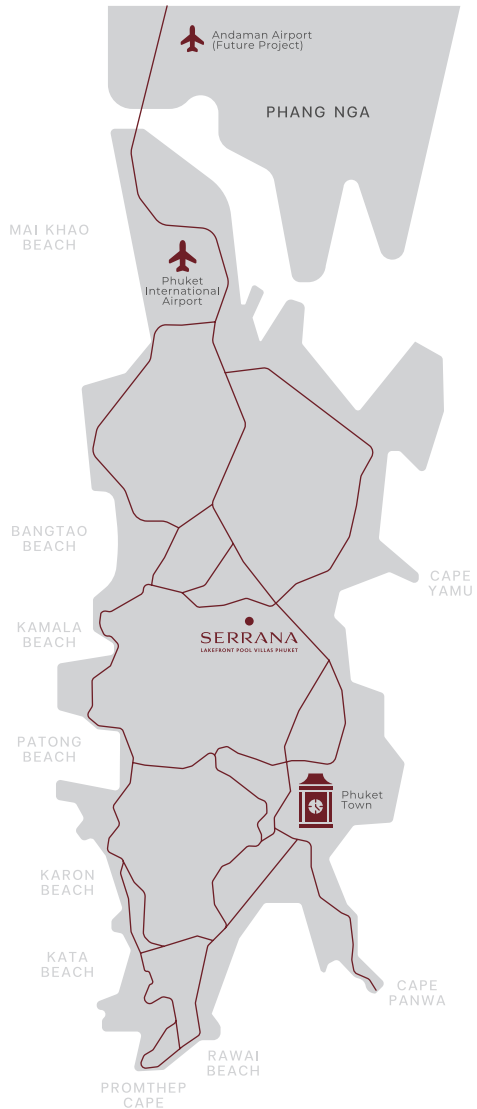
Imagine a home where every breath of air feels as fresh as the dawn. SERRANA's design invites the breeze to dance through your living spaces, with large windows and thoughtful layouts ensuring natural ventilation throughout. It's a place where artificial cooling takes a backseat to the gentle, constant flow of fresh air, making your home feel alive with the surrounding nature.



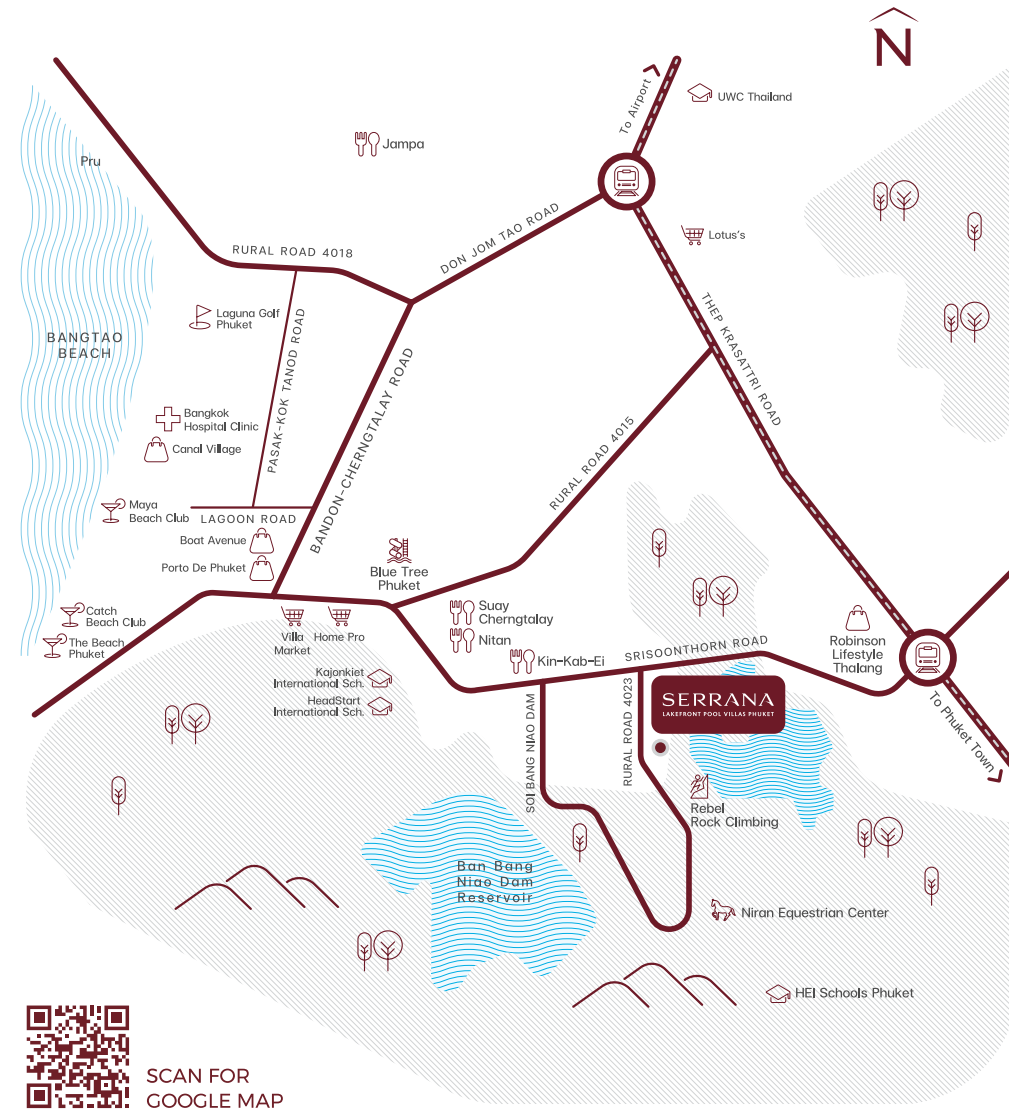
GUARDED TRANQUILITY: SECURITY IN SERENITY

Luxury extends to your peace of mind. Comprehensive security systems are seamlessly woven into the fabric of your home, providing a sense of safety that allows you to truly relax. From discreet surveillance to secure access, every measure is taken to protect your serene retreat, ensuring that the tranquility of SERRANA is yours to enjoy worry-free.

PROJECT LOCATION



	SHOPPING		
	Robinson Lifestyle Thalang	3.2 KM.	
	Villa Market	3.7 KM.	
	Home Pro	3.7 KM.	
	Porto De Phuket	4.2 KM.	
	Boat Avenue	4.7 KM.	
	Canal Village	6.2 KM.	
	Lotus's	7.6 KM.	
	SCHOOL		
	HEI Schools Phuket	1.9 KM.	
	Kajonkiet International School	2.8 KM.	
	HeadStart International School	2.8 KM.	
	United World College Thailand (UWC)	14 KM.	
	RESTAURANT		
	Kin-Kab-Ei	0.7 KM.	
	Suay Chergntalay	1.2 KM.	
	Nitan	1.2 KM.	
	Jampa	12 KM.	
	Pru	14 KM.	
	LEISURE & ACTIVITIES		
	Rebel Rock Climbing	0.4 KM.	
	Niran Equestrian Center	1.2 KM.	
	Blue Tree Phuket	2.9 KM.	
	Laguna Golf Phuket	7.7 KM.	
	BEACH CLUBS		
	Maya Beach Club	6.2 KM.	
	Catch Beach Club	7.2 KM.	
	The Beach Phuket	7.5 KM.	
	INTERNATIONAL HOSPITAL		
	Bangkok Hospital Clinic	6.2 KM.	



SCAN FOR
GOOGLE MAP



BUILDING TRUST, CREATING VALUE

ARNA, established in 2018, is a name synonymous with trust and innovation in the real estate industry. With a solid foundation in the success of Tri Property Company Limited, ARNA has developed a series of landmark projects, including SERRANA. With a portfolio valued at over 3 billion baht,

ARNA's expertise extends beyond residential developments to include hotels, elderly care, and commercial real estate. Each project, like SERRANA, is a testament to ARNA's vision of blending luxury with nature, creating homes that are not just places to live, but investments in a better way of life.

(01) ZCAPE CONDOMINIUM



THALANG DISTRICT, PHUKET

50 m. from Boat Avenue
 50 m. from Porto De Phuket
 7 stories with 198 Units
 Completed 2014
 Sold Out

(02) ZCAPE 2 CONDOMINIUM



THALANG DISTRICT, PHUKET

50 m. from Boat Avenue
 400 m. from Porto De Phuket
 7 stories with 189 Units
 Completed 2015
 Sold Out

(03) ZCAPE 3 CONDOMINIUM



MUANG PHUKET DISTRICT, PHUKET

300 m. from Central Phuket
 8 Stories with 417 Units
 Completed 2016
 Sold Out

(04) SPACE CONDOMINIUM



MUANG PHUKET DISTRICT, PHUKET

1 Minute from Central Phuket
 7 Stories with 197 Units
 Completed Q3/2020
 Sold Out

(05) SPACE CHERNGTALAY CONDOMINIUM



THALANG DISTRICT, PHUKET

300 m. from Boat Avenue
 500 m. from Porto De Phuket
 3 mins from Blue Tree
 8 Stories with 170 Units
 Expected Completion Q2/2025
 Sold Out



(06) TRAVELODGE PHUKET
TOWN-HOTEL



MUANG PHUKET DISTRICT, PHUKET
300 m. from Central Phuket
7 Stories with 165 Keys
Opened Jan 2022

(07) BLU MONKEY BANGTAO
BEACH - HOTEL



THALANG DISTRICT, PHUKET
5 mins from Bang Tao Beach
7 stories with 73 Keys
Opened Nov 2024

(08) MIXTOWN CHERNGTALAY
HOME OFFICE



THALANG DISTRICT, PHUKET
200 m. from Boat Avenue
400 m. from Porto De Phuket
3 mins from Blue Tree
Home Office 4 stories
Completed Dec 2022
Sold Out

(09) TINSMITH - HOME OFFICE



THALANG DISTRICT, PHUKET
5 mins from Bang Tao Beach
100 m. from Boat Avenue
500 m. from Porto De Phuket
5 mins from Blue Tree
Home Office 4 stories
Completed Jan 2024
Sold Out



091-787-8228 | SERRANAPHUKET.COM



LINE



WHATSAPP

Sole Agent



PROJECT: SERRANA, LOCATED AT SRISUNTHON SUB-DISTRICT, THALANG DISTRICT, PHUKET PROVINCE. THE OWNER: TINSMITH DEVELOPMENT COMPANY LIMITED, HAVING COMPANY REGISTRATION NUMBER 0105565196727, AND OFFICE ADDRESS AT NO. 1, PROMPHAN 2 OFFICE AND RESIDENCE, LEVEL 6, UNIT NO. 610, SOI LADPHRAO 3, CHOM PHON SUB-DISTRICT, CHATUCHAK DISTRICT, BANGKOK PROVINCE 10900. REGISTERED CAPITAL (BAHT): 20,000,000. THE AUTHORIZED DIRECTORS: MR. ADISORN VIVAKANOND AND MR. CHAIWAT TUNTIWIWAT. TOTAL LAND AREA: APPROXIMATELY 9 RAI 3 NGAN 54.28 SQUARE WAH (3,954.28 SQUARE WAH). THE LAND IS CURRENTLY UNDERGOING LAND SURVEYING AND IS IN THE PROCESS OF TRANSFERRING OWNERSHIP. THE PROJECT IS IN THE PROCESS OF PROCURING FINANCIAL INSTITUTIONS. THE CONSTRUCTION PERMIT WILL BE SUBMITTED IN THE LAST QUARTER OF 2024, THE CONSTRUCTION IS EXPECTED TO START IN THE FIRST QUARTER OF 2025. ALL TEXTS AND SIMULATED IMAGES IN THIS DOCUMENT ARE FOR ADVERTISING PURPOSES ONLY. THE COMPANY RESERVES THE RIGHT TO MAKE ANY CHANGE TO THE ADVERTISED DETAILS WITHOUT PRIOR NOTICE.